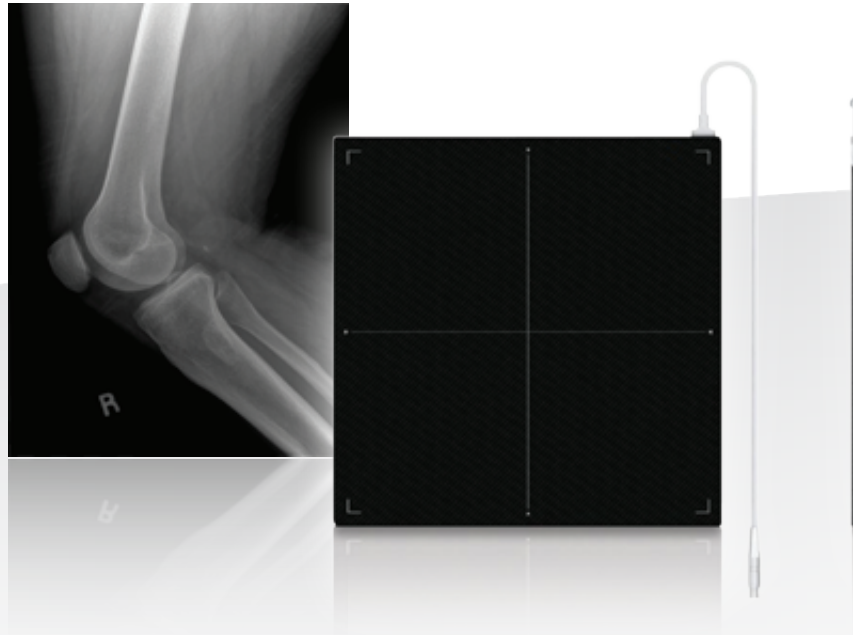


# Tiger DR-C

Acquire | Store | View | Share

## Cassette Sized Flat Panel Detector



### Simple, Fast and Cost-effective DR Solution

Tiger DR-C is a cassette sized 17 x 17 inch flat panel detector that fits into existing bucky trays and requires no rotation for full anatomic coverage.

The "Autosense" technology takes care of the exposure timing so a generator connection is not necessary, which means a service technician is not needed to perform a complex calibration program.

The result is an ultra-thin and light weight detector that allows world class digital imaging with no change to the existing x-ray system.

#### Tiger DR-C Benefits Include:

- No Generator Connection
- Plug & Play
- Cassette Sized
- No Table or Cabinet Modification
- No Calibration
- Improved Workflow
- 17 x 17 inches
- No Detector Rotation

TigerView software complements the Tiger DR-C as a complete image management system to acquire, store, view and share images. TigerView provides functionality that will significantly improve your work flow by providing better patient management and accurate diagnosis. Quickly and easily access all digital image files and share them with colleagues and patients. Image manipulation and specialty specific enhancement tools provide maximum information for minimum effort.



8 lbs with one secured wire connection



17" x 17" active imaging area



Under 10 second image acquisition time



Directly integrates with TigerView Software



No cassettes necessary



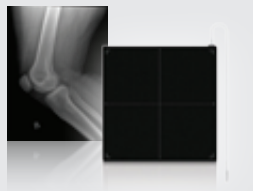
1 year warranty

Call us for an in-office demo today.

**1-800-385-9593**

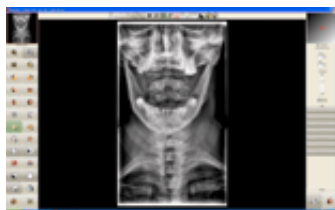
## Tiger DR-C

### Cassette Sized Flat Panel Detector



#### SPECIFICATIONS

Application	General Radiography
Sensor	a-Si TFT array Flat Panel Detector
Conversion Screen	HD <sup>Plus</sup> or CsI
Active Area	17 x 17 inch (430 x 430 mm)
Sensor Pixel	3,072 x 3,072
Pixel Pitch	139 $\mu$ m
A/D Conversion	14 bits
Image Capture Cycle Time	10 seconds (approximately)
Wired Interface (Data Output)	Gigabit
Auto Trigger	Auto X-ray sensor
Voltage	AC 100-240V, 50/60Hz
Environment	Storage: -10 ~ 60°C, 10 ~ 90% RH (non-condensing) Working: 10 ~ 35°C, 20 ~ 75% RH (non-condensing)
Dimensions (W x L x H)	462 x 464 x 15 mm (Cassette-Sized for the standard table or wall bucky)
Weight	3.8 kg, 8.4 lb
Spatial Resolution	3.6 lp / mm



For complete product information, visit [televeresystems.com](http://televeresystems.com).

**TELEVERE**  
SYSTEMS

101 East Milwaukee Street, Suite 405 | Janesville, WI 53545 | **p** 800.385.9593

TIGER DR-C ORTHO 05-13-2013