

iCR3600 with TigerView Software

Acquire | Store | View | Share

Flat Scan Path CR



Simple, Easy and Cost-effective CR Solution

The iCR3600 computed radiography equipment and TigerView software provides exceptional image quality, high throughput and low cost of ownership.

Although computed radiography technology has been widely accepted, all major manufacturers follow the same pattern of removing the costly phosphor plates and running them through rollers in their CR readers. The iCR3600 has re-invented how CR technology works with a True Flat Scan Path™. This technology ensures the phosphor plate never leaves the cassette to avoid any plate handling, damage or wear during the scan process, making 300,000+ images per plate a reality.

- Wall mountable CR
- True Flat Scan Path™
- One moving part
- 300,000 images per plate
- Easy integration to any X-ray room

To complement your iCR3600, you need imaging software to acquire, store, view and share images. TigerView, a Televere Systems product, will significantly improve your work flow for better patient management and diagnosis. Quickly and easily access all digital image files and share them with colleagues and patients. Window leveling and viewer enhancement tools allow for complete control of image display.



78 lbs



Accepts 14" x 17" and 10" x 12" cassettes



52 second cycle time (14" x 17" cassette)



Directly integrates with TigerView software



1 year warranty on CR and 3 year warranty on imaging plates

Call us for an in-office demo today.

1-800-385-9593

iCR3600 with TigerView Software

Flat Scan Path CR



SPECIFICATIONS*

Spatial Resolution

Micron Spot Size	Pixel Per mm	Dots Per Inch (DPI)	Line Pairs Per mm
200	5	127	2.5
100	10	254	5

Grayscale Resolution 16 bits / pixel source file, 65536 shades of gray

Image Access Time 35 seconds (14" x 17")

Plate Throughput 94 plates per hour, mixed cassette sizes

Cassette Sizes 14" x 17" (35 x 43 cm), 10" x 12" (25 x 30 cm), 8" x 10" (20 x 25 cm), odd plate sizes accepted and flexible plates scanned using glass cassette system

Weight 78 lbs

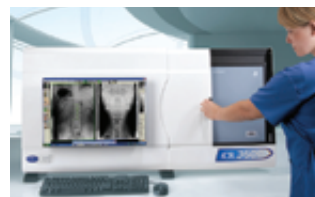
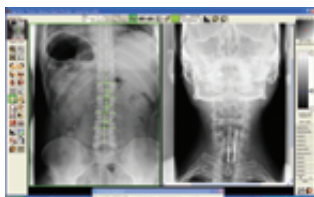
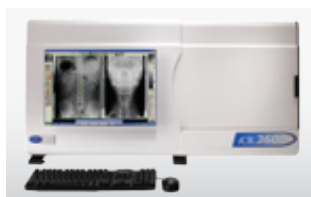
Dimensions 44" x 12" x 23" (112 x 31 x 59 cm) (W x H x D), wall mountable

Power Source 100-240V AC / 2.5A max; 47-63Hz (universal power supply)

Heat Generation Standby 230W, maximum 1610W

Operating Conditions
Temperature: 32-105°F (0-40°C)
Temperature change: 0.5°C/min
Humidity: 15%-95% RH
Magnetic fields: max 1260 μ T (in conformance with EN 61000-4-8: Level 3), 10 A/m

* Specifications are subject to change without notice. Processing and display time dependent on processor speed, RAM disk access time, and video card.



For complete product information, visit televeresystems.com.

TELEVERE
SYSTEMS

101 East Milwaukee Street, Suite 405 | Janesville, WI 53545 | **p** 800.385.9593

ICR3600 TIGERVIEW 06-10-2013