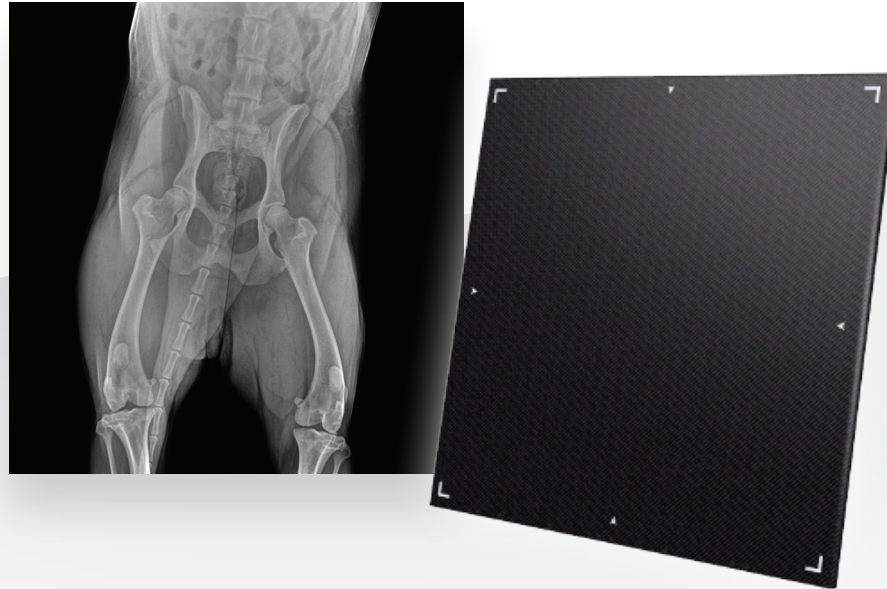


Tiger DR – AT Vet

Acquire | Store | View | Share

17x17 Cassette Sized Wired or Wireless Detector



A Cost Efficient DR Solution with Simple Integration

Tiger DR – AT Vet is a 17x17 inch cassette sized flat panel detector that fits into existing bucky trays and requires no rotation for full anatomic coverage. The Automatic Exposure Detection technology means the Tiger DR – AT Vet is hardware neutral and does not need a generator connection to synchronize the exposure signal.

The Tiger DR – AT Vet has Auto Calibration Control, so your practice will not need a service engineer for periodic calibration or recalibration of the detector.

Tiger DR – AT Vet Benefits Include:

- No Table or Cabinet Modification
- No Generator Connection
- No Calibration
- Improved Workflow
- Light Weight
- Cassette Sized
- Optimized Battery Design
- Made for Mobile

TigerView software complements the Tiger DR – AT Vet as a complete image management system to acquire, store, view and share images. TigerView provides functionality that will significantly improve your work flow by providing better patient management and accurate diagnosis. Quickly and easily access all digital image files and share them with colleagues and patients. Image enhancement and specialty specific measurement and annotation tools provide maximum information for minimum effort.



Directly integrates with TigerView software



7 lbs. with battery



17" x 17" active imaging area



Carbon housing with handgrip is specially designed to support up to 440 pounds



Equipped with Automatic Exposure Detection technology



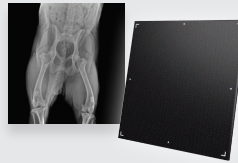
Calibration data embedded in the detector

Call us for an in-office demo today.

1-800-385-9593

Tiger DR – AT Vet

17x17 Cassette Sized Wired or Wireless Detector



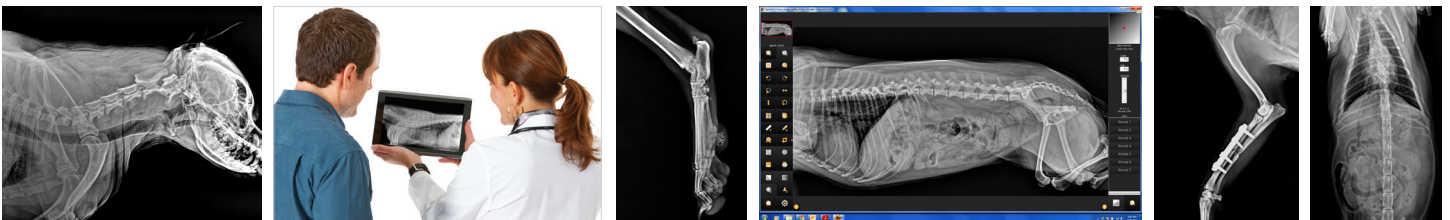
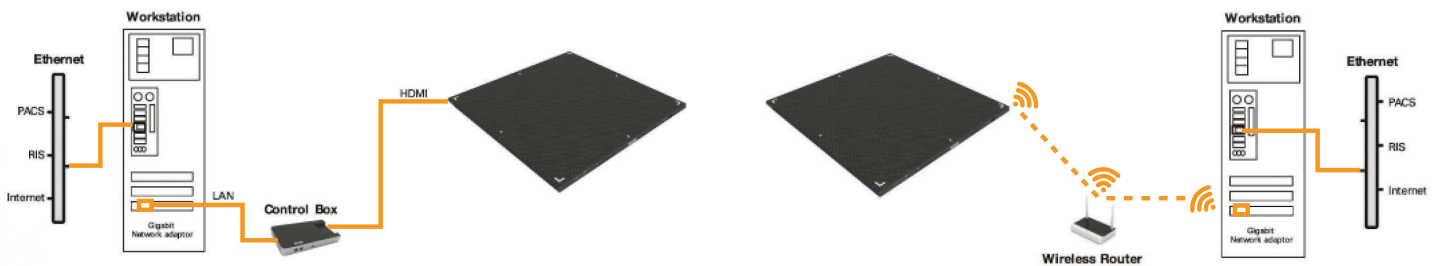
SPECIFICATIONS

Application	General Radiography	Capture Cycle Time	2~5 seconds (approximately)
		Interface (Data Output)	
		Wired	Gigabit Ethernet
Sensor	a-Si TFT array Flat Panel Detector	Wireless	N/A
Conversion Screen	GOS	Voltage	AC 100~240V~, 50/60Hz
Active Area	17 x 17 inch (430mm x 430mm)	Wireless Standard	
Sensor Pixel	3,072 x 3,072 (9.4M pixels)	Wired	N/A
Pixel Size	140µm	Wireless	IEEE 802.11ac
Image Data	16 Bits	Battery	Lithium Ion Polymer Battery
Trigger Mode	AED (Automatic Exposure Detection), Manual Trigger	Environment	Storage: -10°C~60°C, 10%~90% RH (Non-condensing) Operation: 10°C~35°C, 20%~75% RH (Non-condensing)
Calibration Mode	ACC (Auto Calibration Control), Manual Calibration	Dimensions (W x L x H)	460mm (W) x 461mm (L) x 15mm (H)
Data Transfer Time	Less than 1 second	Weight (Without Battery)	1.95 kg (4.3 lbs.) / 2.65 kg (5.8 lbs.) / 3.2 kg (7 lbs.)

WIRED DETECTOR

OR

WIRELESS DETECTOR



For complete product information, visit televeresystems.com.