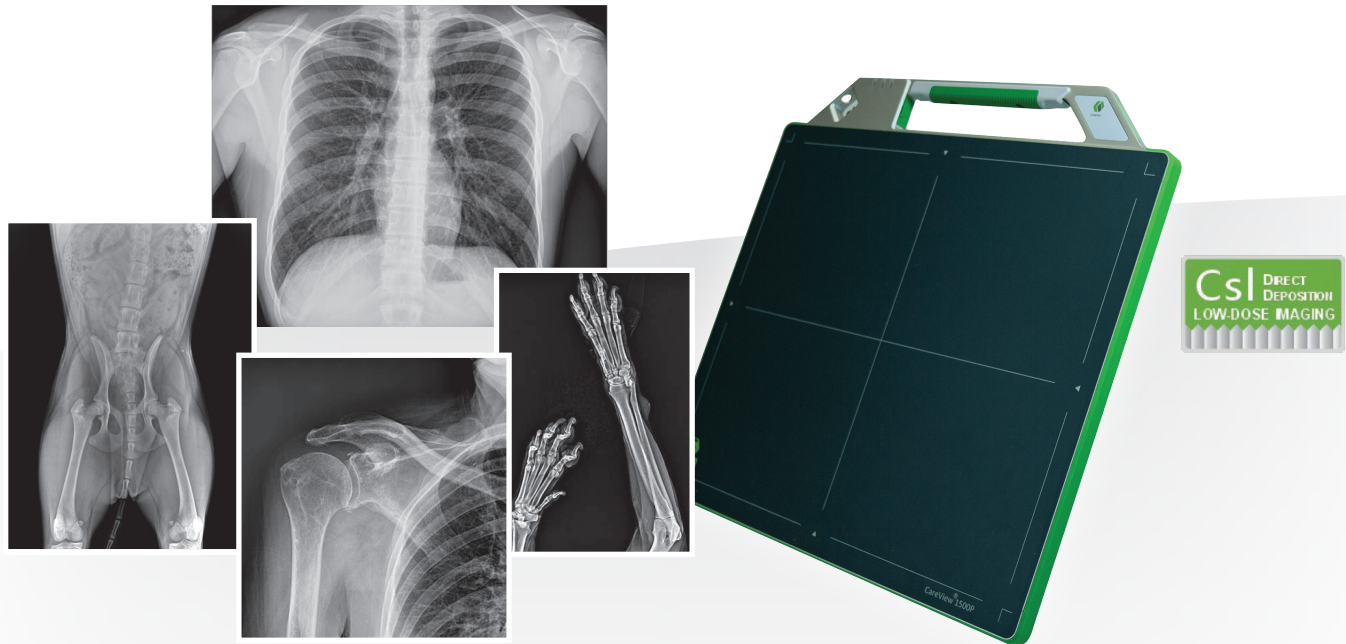


Tiger DR – CWP

Acquire | Store | View | Share

Wireless Portable Detector



High Quality, yet Simple and Cost-effective CSI DR-Wireless Solutions

The Tiger DR – CWP is a wireless 14"x17" **CESIUM** flat panel detector for the medical and veterinary markets. The aluminum-alloy, uni-body enclosure with impact-absorption, rubber edges and water-resistant seals offers a highly durable detector solution for the most challenging portable environments.

Tiger DR – CWP incorporates an advanced F²AED technology that ensures no blind areas are on the detector which provides reliability and sensitivity even when the x-ray dose is low. Cable connection with an x-ray generator is not required. In addition to outstanding battery life, the detector offers dual band (2.4GHz / 5GHz 802.11n) wireless transmission producing a completed image within 8 seconds.

Tiger DR – CWP benefits include:

- Least amount of scatter, leading to best resolution (MTF)
- Low photon coupling, leading to best detector quantum efficiency (DQE)
- No glue and needle crystals (CsI Direct-Deposit Technology), leading to reliable long-term performance and lower dose
- Up to 7 hours battery life



8 LBS

8 lbs, with easy access handle



14" x 17" active imaging area



8 second image acquisition time



Directly integrates with TigerView software



Uni-body case, extra shock absorption protection and rubber seals



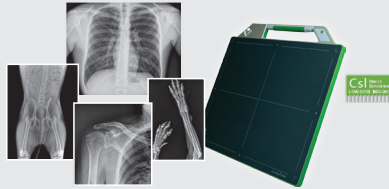
3 year warranty

Call us for an in-office demo today.

1-800-385-9593

Tiger DR – CWP

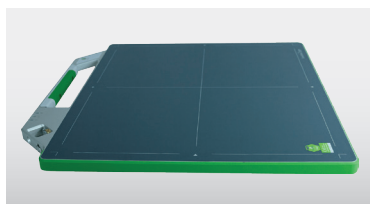
Wireless Portable Detector



14"x17" SPECIFICATIONS

Sensor	
Scintillator	Direct Deposit Csl: Tl
Pixel Area	434 mm x 355 mm
Pixel Array	2816 x 2304
Pixel Pitch	154 µm
Image Quality	
Limiting Resolution	3.3 lp/mm
MTF	70%(@ 1 lp/mm)
	40%(@ 2 lp/mm)
	22%(@ 3 lp/mm)
DQE	(@RQA5, 30 µGy)
	~ 65%(@ 0 lp/mm)
	~ 20%(@ 3 lp/mm)
Sensitivity	~ 0.62 ct/nGy
Response Non-linearity	< ± 0.5%
Maximum Linear Dose	95 µGy
Dark Noise	~ 8 nGy
Dynamic Range	~ 82 dB
Greyscale	16 bits
Communications	
Communication Interface	Gigabit Ethernet or wireless 2.4/5 GHz, 300 Mbps
Image Acquisition Time	2 – 3 sec (wired)
	4 – 5 sec (wireless)
Exposure Control	F ² AED® (optional)
	Manual

Environmental	
Operating	
Temperature Range	5°C – 35°C
Humidity Range (Non-condensing)	30% – 75% RH
Storage	
Temperature Range	-20°C – 55°C
Humidity Range (Non-condensing)	10% – 90% RH
Mechanical	
Dimensions	477.4 mm (h) x 453.6 mm (w) x 18.4 mm (d)
Weight	4.0 Kg (incl. battery)
Housing Material	Carbon Fiber (front)
	High Strength Aluminum Alloy (back)
Power	
Maximum Power (standby/operating)	8 W / 20 W
Power Supply	100 – 240V AC
Frequency	50/60 Hz
Regulatory	
FDA	K150929
CE	HD 60107735 0001
UL	E464810
HC	96952



For complete product information, visit televeresystems.com.